



# EWELL PARISH NEWS



The monthly newspaper of St Mary the Virgin

No.426

July 2008

60p

**Sharing the Love of Christ, the Light of the World, with the people of Ewell**



## **E V F** **EWELL VILLAGE FAIR**

**Saturday 19th July 2008 - 10.30am to 4.00pm**

Proceeding through Ewell come the Ewell Morris Men,  
The Mayor will be there at half past ten,  
To open the Fair, we are sure with some flair,  
Retriever dogs groomed beyond compare,  
The great BBQ with hot helpers "phew" !  
And refreshments on sale in the School Halls too,  
A majestic sound from the marching Band,  
Will compete with the goods on the stalls and stands,  
Books galore, and with plants and jewels,  
We hope will sell out as the long day cools!  
Sunshine or showers we know, come what may,  
The Fair at Ewell Castle is a wonderful day,  
A great opportunity for you to take,  
All children free, only £2 on the Gate!

**COME AND ENJOY  
ALL THE FUN OF THE FAIR**

# THE VICAR writes

## THE LAMBETH CONFERENCE

I suppose I ought to say something about this very important Conference of Anglican Bishops, which happens every ten years, since it is taking place once again early this month at the University of Kent at Canterbury. It comes at a time when the tensions in world-wide Anglicanism on matters of moral theology and on ecclesiology (the doctrine of the nature of the Church) have threatened to tear apart that very fragile coalition which is global Anglicanism. The Lambeth Conference is not like, say, the Vatican Council in Rome. It possesses no executive authority at all, even though there have been calls from time to time for it to assume such a role. That is not an easy position to adopt in a federation of independent Churches, whose only official connexion is that they are all in communion with the See of Canterbury and with one another. In recent years that particular principle has been greatly tested, and it remains to be seen whether the future picture of worldwide Anglicanism will be entirely characterized by that principle. It is already showing signs of not being totally water-tight; leaks are happening here and there. However, the Lambeth Conference still seeks to exercise a guiding influence on the general direction followed by this particular family of Christian Churches. In that sense it possesses 'a moral authority', and so, for that matter, does the office of Archbishop of Canterbury.

It is encouraging to realise that Anglicanism is indeed a world-wide part of the Christian Church, and that if one goes to (say) Australia, one can encounter something which – generally speaking – is recognizable as the Christian family we know back home. Having said that, some provinces of the Anglican Communion are virtually monochrome in churchmanship, and one cannot always expect to find the variety of 'styles' of Anglicanism that one encounters generally in England, or indeed locally in Epsom and Ewell. This factor was partly brought about by nineteenth century missionary activity: high churchmen in the mission field brought with them a largely sacramentalist approach to the Christian faith, with a stress on the life of grace and sanctification; low churchmen brought with them a stress on the total acceptance of the text of the Holy Scriptures, and sometimes with a heavy stress on the doctrine of the Atonement in the form known as penal substitution. All of this has now come home to roost, because western liberal radicalism does not necessarily blend easily with what exists in many other parts of the Anglican Communion. That liberal radicalism is now associated with the prevailing *ethos* of many of the older provinces of the Communion, notably the U.S.A. and Canada, but also to a large extent in the Church in these islands. Various problems of moral theology, which afflict the contemporary Church are, in the end, traceable to this situation. At the end of the day, problems to do with sexual ethics in a Christian context relate to an understanding of the basic nature of the biblical writings (as this is understood in the current climate of Biblical scholarship), rather than what the precise words of (say) Leviticus have to say on the particular subject. There is a clash of Christian cultures here, and the clash exists strongly within the Anglican Communion, and the Lambeth Conference is an obvious occasion for such matters to rise to the surface. However, the Archbishop of Canterbury is on record as saying that,

## St Mary the Virgin EWELL PARISH CHURCH

# 020 8393 2643

Website: [www.stmarysewell.com](http://www.stmarysewell.com)

### CLERGY

**Canon W R Hanford MA BD LLM** Vicar of Ewell  
Ewell Vicarage, Church Street, Ewell, Epsom KT17 2AQ  
**The Reverend Patrick Miller MA PhD (Honorary)**

### READERS

Mr Reginald Saunders MA MEd 020 8393 5550  
Mrs Wendy Varney 020 8393 5212

### CHURCHWARDENS

Mr David Crick 07850 709461  
Mr Jonathan Gocher 020 8224 5942

## SUNDAY AT ST MARY'S

### 0800 HOLY COMMUNION

### 0930 SUNG EUCHARIST

The Wayfarers and the Sunday School meet in conjunction with this service, and there is a Creche provided in church.

There is coffee in the church hall between the Eucharist and Mattins on Sunday mornings, and a chance for members of the congregation to meet or visitors to be welcomed to St Mary's.

### 1100 MATTINS

(Third Sunday in each month SUNG EUCHARIST to the Book of Common Prayer Rite)

### 1200 HOLY COMMUNION

(On Greater Festivals and on the last Sunday of the month except in December)

### 1830 EVENING WORSHIP

Either at St Mary's or at Ewell United Reformed Church. Details are on the Notice Board or on the Weekly Notes.

Occasionally there are variations from this pattern; details are given in this paper, on the Notice Board or on the Weekly Notes available on Sundays.

### ON WEEKDAYS

The Eucharist is normally celebrated at present on Tuesdays at 1000, and at other times as printed on the Weekly Notes. Most of the Weekday services take place in the Parish Room (entry through the door on the Church Street side of the Church).

### THE PARISH OFFICE

#### Administrator:

Mrs Lynne Yuille 020 8393 2643 (Office)  
Office email: [parishoffice@stmarysewell.com](mailto:parishoffice@stmarysewell.com)

This is in the Sacristy on the south side of the church and is open from 0930 to 1300 on Monday to Friday, (though at present it is not usually open on Thursdays). Also on Friday evening from 1830 to 2000, except in August, the office is open particularly for routine enquiries about Baptism, Banns of Marriage, Confirmation, or fixing up later appointments.

**The Vicar** is not usually available on Thursdays, and would be grateful not to be contacted on routine matters. Emergencies are different.

EST.1934  
**A.E. BOOTH & SON**  
**REPAIRS TO**  
**ANTIQUE &**  
**REPRODUCTION**  
**FURNITURE**  
 300 Hook Road, Hook  
 Chessington KT9 1NY  
**020 8397 7675**

**P.S. GALE**  
**DECORATORS**  
 A high quality interior &  
 exterior service by a  
 qualified craftsman  
**020 8786 0601**

**FAIR**  
**SPRING-**  
**BOARD**  
**2008**  
 Thank you to everyone for contributing to the Fair Springboard. The final total was £601 which goes towards the Village Fair expenses.



despite the ongoing controversy on human sexuality, the Communion could not discuss the situation on any assumption that the teaching of the church had changed since 1998. Dr Williams has said: 'Despite the levels of bitter controversy over sexuality in the Communion, I do not hear much enthusiasm for revisiting in 2008 the last Lambeth Conference's resolution on this matter.' Nevertheless, Dr Williams draws attention to the provisions made for the Communion to discuss and debate the matter, and he has reminded the bishops of their undertaking to collect and collate the work done in the various provinces on the issue and of the need to reflect on implications of the current controversy for the common life of the church. It remains to be seen how far there will be 'peace in our time' on these matters – and I am well aware of the historical situation in which those words were famously uttered. There can be little doubt that the controversies of recent years have spotlighted the difficulties of making 'Anglican decisions' in a corporate way; such difficulties necessarily arise in a Communion, which by its very nature is such a loosely-linked federation.

It is perhaps worth heeding the words of the Apostle in this connexion: 'Let no-one among you think more highly of himself than he ought to think.' The Anglican Communion is not a major player numerically in terms of world Christianity (in fact world-wide Methodism is, I believe, larger), but it is an important player nevertheless, because of its unusual history and its present reality as a Church displaying Catholic Order but clearly also standing within the Reformed tradition in many respects. There is a very influential Anglican Centre in Rome, and, as far as I am aware, this is something unique; no other non-Roman Christian body has such a presence there. The words of St Paul, quoted above, ought to be a constant reminder to Anglicanism that there are times when the distinctive features of a particular Christian body ought not to be interpreted as a licence to go down paths which are potentially harmful to the wider quest for unity, peace and concord in the universal Church. It is into that category that questions of ecclesiology are just as important as questions of moral theology. It is for that reason that the proposal for women bishops in the Church of England is not at all the straightforward matter that some might think it to be. (My own views on the subject are well-known, and they will not be developed here.) There *are* women bishops in certain provinces of the Anglican Communion, and they will be at Lambeth; there are also certain provinces where there are no women priests at all. There will inevitably be some measure of tension on this matter as well at Lambeth.

The Lambeth Conference of 2008 has (just like everything else these days) its own mission statement, which is 'Equipping bishops to fulfil their leadership role in God's mission.' The Conference information states that the aim is that all delegates 'will be restored and refreshed spiritually; that they will gain deeper knowledge of each other; become more aware of the spiritual and physical resources God has given them to meet missionary challenges in different parts of the world; develop greater understanding and appreciation of life together in the Anglican Communion; address conflict; discover a new level of trust in common service to God; gain greater understanding of the contribution Anglicanism can make to the worldwide church and the world.' The hope is that these aims will be fulfilled by delegates spending time together in spiritual reflection, learning, sharing experiences, and discerning their particular role in God's mission for the world. Every bishop and spouse coming to the Lambeth and Spouses' Conference is invited to enjoy the hospitality of an English, Scottish or Welsh diocese. Almost all those who wish to take part should now have been 'allocated' to a host diocese, and there will be some coming to the Rural Deanery of Epsom.

It is salutary to realise the great variety of peoples and languages who fall under the umbrella of the worldwide Anglican Communion. The following list is used at St Mary's in our regular Sunday prayer; some of these names consist of only one province with its own Archbishop (or equivalent); others have quite a number, as in the case of the U.S.A. Many have their own very distinctive ways of government and canon law. (In this country the Channel Islands have their own canon law, even though they are part of the Diocese of Winchester.) This world-wide family of independent provinces, loosely attached by this one

*Continued on page 4*

**WA TRUELOVE & SON LTD**  
 INDEPENDENT FAMILY FUNERAL DIRECTORS  
 & MONUMENTAL CRAFTSMEN SINCE 1885



*Serving the local community*

- International repatriation
- Monumental masonry
- Horsedrawn funerals
- 24 hour call out service
- Home visits available

For further details about Truelove guaranteed pre-arranged funerals  
 Call FREEPHONE  
**0800 074 3797**

**EPSOM Tel: 01372 723337** 14/18 Church Road  
 Branches also in: Banstead • Caterham • Cheam  
 Coulsdon • Mitcham • Morden • Sutton • Wallington  
 www.wa-truelove-and-son.ltd.uk email: funerals@wa-truelove-and-son.ltd.uk

To hire the Church Hall please contact  
**020 8394 0453**  
 for full details of cost and availability

**PAINTER & DECORATOR**  
**A.L. BOVIS**  
 Reliable friendly service for all exterior and interior household maintenance and improvements  
 Free estimates given  
**01737 359581**

## JULY MUSIC NOTES 🎵

The five-week season of afternoon Choral Evensongs is now under way, and it lasts until 20 July. There is tea in church from about 1615, with the chance of listening to the singers as they rehearse for the service. There have been some re-arrangements of the musical items and the dates on which they are to be sung. Details of the choral and organ music for the series are given below. Because of these changes there is now a revised service-list in operation, and copies may be found in the Welcome Area at St Mary's or on the notice-boards.

The choir has improved immeasurably during the past year or so, and a very significant amount of new music has been taken on board. There is some more of this in July, but as the holiday season draws closer, and some choir members will be away, there will be some rather less demanding material at some of the services. However, two distinctive events are happening in the early part of the month. The Choral Evensong on 6 July will be sung by the Choir of Emanuel School, with some decidedly ambitious music. It will be followed by a *recital*, which will include Palestrina's *Missa Papae Marcelli*, which our own Parish Choir will have sung at the Eucharist of St Peter and St Paul on the preceding Sunday. On Saturday of the same week at 1930 there will be a Recital by the Parish Choir in the form of a *Soirée Musicale*, which will include choral and instrumental music, with Jeremy Cole at the organ, in a varied programme. Many of the younger members of the choir are in fact quite accomplished instrumentalists, and it will be good to have an event of this sort as part of our 2008 series of concerts and recitals. A handbill with further details may be available in time for inclusion in *Ewell Parish News*.

### THE SUMMER SEASON OF FIVE CHORAL EVENSONGS

22 JUNE - 20 JULY at 17.00

*The remaining services:*

- 6 July **CHOIR OF EMANUEL SCHOOL, CLAPHAM**  
Service: *Howells*, St Paul's. Rose Responses  
*Schutz*, Jauchzet dem Herrn  
*Monteverdi*, Beatus vir  
FOLLOWED BY RECITAL. MUSIC INCLUDES:  
*Palestrina*, *Missa Papae Marcelli*  
*Parry*, Blest pair of sirens  
*Bax*, Mater ora Filium.
- 13 July **THE PARISH CHOIR**  
Service: *Byrd*, Second Service  
*Gibbons and Barnard* Responses  
*Pitoni*, Cantate Domino  
*Brahms*, Geistliches Lied  
Organ: Chorale No.3 in A minor. *Franck*
- 20 July **THE PARISH CHOIR**  
Service: *Harwood* in A flat. *Ayleward* Responses.  
*McKie*, We wait for thy loving-kindness, O Lord.  
*Balfour Gardiner*, Evening Hymn.

**The Vicar Writes:** continued from page 3

principle of being in communion with the See of Canterbury and with one another, attempts to proclaim the Gospel of Jesus Christ in its own distinctive way; where the problem really lies is in the fact that the particular distinctive way is very variously expressed. The following list perhaps in itself helps us to realise the immense range of cultures and peoples who are members of this particular Christian family. At Lambeth 2008 there will be delegates from: Aotearoa, New Zealand and Polynesia, Australia, Bangladesh, Brazil, Burundi, Canada, Central Africa, Central America, Congo, England, Hong Kong and Macau, North India, South India, Indian Ocean, Ireland, Japan, Jerusalem and the Middle East, Kenya, Korea, Melanesia, Mexico, Myanmar (Burma), Nigeria, Pakistan, Papua New Guinea, Philippines, Rwanda, Scotland, South East Asia, Southern Africa, Southern Cone (South America), Sudan, Tanzania, Uganda, U.S.A., Wales, West Africa, and West Indies. There are also a few extra-provincial dioceses (like Bermuda), and there are also Churches with which the whole Communion is in 'full communion'; these include the Mar



Thoma Syrian Church, the Union of Utrecht of the Old Catholic Churches, and the Philippine Independent Church. The Church of England also has its own very close relationships with certain Nordic and Baltic Churches, but – and this emphasises the problem – other Anglican Churches do not have this particular close ecumenical relationship, not least because it is in a sense unrealistic: for what has Papua New Guinea to do with Uppsala?

The activities of the world-wide Anglican Communion do not normally seem to be of much relevance to the reality of life in an outer-suburban commuter parish. However, we belong to that family, and we pray for it Sunday by Sunday. The Bishops coming to the Lambeth Conference need the prayerful support of all Church people at this time. Archbishop Rowan Williams needs our prayers too. His lot is not an easy one. Many people have been quick to criticise the Archbishop in recent years on a whole range of subjects, but he is a man of truth and godliness, with an exceptionally incisive mind; few others would be equal to the task which has been laid upon him. My hope and prayer is that the Lambeth Conference will re-invigorate the episcopal participants in mission and evangelism back home (wherever that is), and bring healing and renewal to minds and hearts which are wearied by troubles and controversies about moral theology and the nature of the ordained ministry. It is time to move on; the world needs to hear the tidings of the love and forgiveness of God, and of redemption through Christ. That is what we are in business for.

Your friend and Parish Priest

*Richard Hanford*

# Greenfield


and Company

Surveyors and Estate Agents

Property Lettings and Management


Ewell Village Branch (Est. 1923)


55 HIGH STREET, EWELL  
020 8393 0077



SOLD  
Greenfield

Also at Tolworth,  
Surbiton & Chessington





SOLD  
Greenfield

Specialising in this area for over 70 years  
PROFESSIONAL AND PERSONAL SERVICE

## SUGGESTED PRAYERS

Strengthen for service, Lord, the hands  
That holy things have taken;  
Let ears that now have heard thy songs  
To clamour never waken.

Lord, may the tongues which `Holy' sang  
Keep free from all deceiving;  
The eyes which saw thy love be bright,  
Thy blessed hope perceiving.

The feet that tread thy hallowed courts  
From light do thou not banish;  
The bodies by thy Spirit fed  
With thy new life replenish.

*English Hymnal 329*

O untreated Light, give me light - light in spirit,  
in mind, in conscience, light when I enter into the  
darkness of sin or problem or doubt or despond-  
ency or suffering, or uncertainty about the way  
ahead.

Lord,  
let me see the light that was in Jesus. Let me  
recognize light wherever it shines, and however  
broken,  
let me rejoice in it. So let me live in Light until I  
come to the perfect, gladsome Light which is  
Thyself.

*Dorothy Sölle*

O God, most holy, loving and merciful  
let your Spirit rest upon me,  
upon the Church,  
upon the whole of mankind,  
and give us his best gifts  
of wisdom and understanding,  
counsel and strength,  
knowledge and godliness,  
and the delight of holy fear,  
The gift of your very Self  
to dwell in our very being

For the sake of him on whom  
your Spirit descended  
in all your fullness  
even Jesus Christ, your beloved Son  
and our beloved Lord.

*George Appleton*

Visit the Surgery or ask for our  
Domicilliary Service provided for the Elderly at Home

## Chiropody Service

The Longmead Centre  
Sefton Road, Epsom KT19 9HG  
Tel: (01372) 745150 (Surgery)  
020 8393 1245 (Alternate Call)

Your Feet will Thank You



## COFFEE MORNINGS

WE MEET EVERY WEDNESDAY  
FROM 10.30 am – 12 noon  
IN THE CHURCH HALL

We are looking forward to a talk by Canon  
Richard Hanford on 9 July entitled

“Sinners of Ewell”

The talk will begin at 11.00 in the Church Hall  
and coffee/tea will be served from 10.30 - 11.00  
We hope to see you there.

## FAIR HOPE FROM THE VICAR

I hope everyone will have a marvellous time at the Village Fair on 19 July. Last month's alarm-bell in EPN does not seem to have been heard all that clearly, and we do have a major problem on our hands if all the work done by Kathie and Ian Burgess, not to mention all their predecessors, should come to an end if no-one will take up the challenge for the next three years. Come to an end it will, if no-one takes it on, and we shall be without the very substantial takings upon which we greatly rely, for we run at a substantial deficit in spite of prudent husbandry. Running the Village Fair is quite a job, but the whole operation is well-documented, and there will be lots of support from past organisers. We are obviously getting very exercised about this. Any enquiries to me or to Kathie and Ian Burgess.

Your friend and Parish Priest  
*Richard Hanford*

## HOPE 2008

The ecumenical outreach afternoon planned by Churches Together in Ewell and Stoneleigh (C.T.E) at Bourne Hall on Sunday 6 July is providing St Mary's with the opportunity to have a gazebo with children's toys and activities, together with various display boards.

As mentioned in *EPN* for June, C.T.E. Would very much appreciate covered home-made cakes for the refreshment stall. These can be taken direct to the stall on the afternoon, or into Church on the Sunday morning. Please do come along and support our local churches and their work in the community.

*Sarah Stovell*

## COFFEE MORNING COACH OUTING

The second coach outing for 2008 is planned for Thursday 11 September when we shall be visiting Chichester and Bosham.

We should arrive in the market town of Chichester around 11.00/11.15 when there will be the opportunity to visit the Cathedral, enjoy lunch at one of the eating places or potter around the many shops.

After lunch the coach will take us to the delightful village of Old Bosham and quay.

The beautiful Saxon church stands next to the mill stream and is a "must" to visit. It is thought that Canute's daughter is buried here.

Wander along the narrow High Street with picturesque houses and cottages, visit the Art and Craft Centre or partake of a cup of tea.

The coach will depart 9.15/9.30 and return to Ewell a little later than usual, leaving Bosham at 17.00.

Amazingly, seats are still just £10 each and bookings are now being taken.

Please give your names together with the money to Joan Boulden or Lynne Yuille to secure your seats.

## EWELL VILLAGE FAIR Saturday, 19 July 2008

Please help us to make a great  
day even better

Help and support needed in many ways from donations for stalls to selling tickets on the gate.

Bottles,  
Books  
Cakes,  
Linens,  
Fancy Goods,  
Bric-a-Brac,  
Groceries,  
Plants,  
More Cakes,  
Jewellery and  
small Antiques

all needed - please contact organisers or leave donations at the back of church.

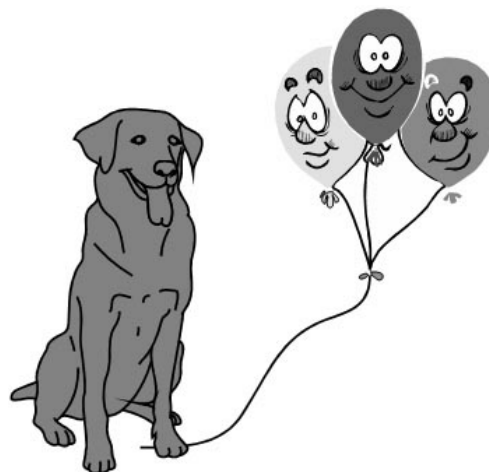
Please help to sell our raffle tickets or volunteer for an hour on the gate.

Fancy running a sideshow or helping to serve lunches?

Please see the Fair Noticeboard at the back of the church or contact:

Kathie Burgess on 020 8786 8475 or email

*fair@burgess.org.uk.*



## NEXT TIME YOU'RE ON THE RIVIERA

The opening up of Nice's Anglican church has had an enormous impact, says *Carolyn Reynier*.

Thirteen years ago Canon Kenneth Letts left Melbourne, Australia, for the south of France to become the permanent chaplain of the Anglican Church of the Holy Trinity in Nice.

He was familiar with the parish, having looked after it for three months while studying in Nice. A teacher by profession, he joined the priesthood after reading Trevor Huddleston's *Naught for your Comfort*, and trained at the Community of the Resurrection seminary at Mirfield in West Yorkshire.

The original church was founded on the existing site in 1820 by the Reverend Lewis Way, the chaplain responsible for the creation of the palm-tree-lined Promenade des Anglais that curves round the Baie des Anges. Nice was a popular winter destination for the British. Many came for health reasons, but the mild Mediterranean climate was not always enough: English, Scottish and Irish names engraved on tombstones in the shaded cemetery bear testament. Henry Francis Lyte is buried here. The part we sing of his two-part poem, *Abide With Me*, was composed at Avignon on his way south.

The church did not remain open all year; there was no chaplain in permanent residence. In 1842, it came under the jurisdiction of the Diocese of Gibraltar; then in 1860, Nice and its county, part of the duchy of Savoy for five centuries - and more recently the kingdom of Sardinia with its capital in Turin - was annexed to France. The new French government gave permission for the construction of the present church. Although year-round services became the norm in the late 1800s, it remained a closed church - both physically and in the sense that it was regarded by the local population as a private building owned by and serviced by the British community. The Nicois knew little about it.

In the 19th century visitors to Nice were primarily British and Russian. The dowager empress Alexandra Feodorovna was

a regular visitor and Queen Victoria stayed here in the 1890s. In the 20th century - particularly after the second world war - Americans arrived; today Nice is an international tourism destination. For Canon Letts, a closed church was a contradiction in terms. Since his arrival the church has been open daily. This has had an enormous impact upon not only the English-speaking community but also the Nicois, who now regard it as a "normal" church. Worshippers from South Africa, Australia, New Zealand and Canada now have an English-speaking centre where, after the Sunday-morning service, a vin d'amitie is served in the garden.

Through marriage, some parishioners are French. Services may be conducted in French or in both languages. The church is now an accepted part of the community. Ecumenical relations with other churches are excellent. "They recognise that we take our faith seriously," says Canon Letts. "We don't keep apart, doing our own thing, disregarding their interests." He hosts a monthly meeting, in French, of clergy from other churches in Nice: Roman Catholic, Russian and Greek Orthodox, Armenian, Eglise Reformee de France, Lutheran, Salvation Army, Baptist.

The church has two priorities, says Canon Letts: to serve God, and to serve his people. Financially that makes life tricky. The church is self-supporting, receiving "not a cent" from anyone, and pays "horrendous" taxes. It does not make economic sense to give four out of six Sunday collections away, he says, but we do - we believe it is our duty.

Nice tends to attract older Anglophones, so there are few young parishioners. Canon Letts is philosophical: "We may have more young worshippers in Australia, but I gather in England this is the pattern. The church for centuries has lived with these ebbs and flows."

*Carolyn Reynier is a British journalist based in Nice and Scotland*

### FROM THE PARISH RECORDS

#### HOLY BAPTISM

**We welcome you into the Lord's family**

18 May	Luke Arthur Harold Adams
15 June	Matthew Christopher Brook Thomas Charles Brook

#### HOLY MATRIMONY

**A gift of God in creation, and a means of his grace, a holy mystery'  
(Alternative Service Book Marriage rite)**

17 May	Michael John Ravenhill and Lisa Jane Howard
31 May	Neil David Kaemena and Louise May Ansell
14 June	Stephen James John Bishop and Rachael Louise Burgess

#### FUNERALS

**I will come again and take you to myself (St. John 14:3)**

28 May	Ivy Snowdrop Jordan, aged 93 Roy George Glazebrook, aged 73
--------	--

## The holy post: coming to a church near you

When the Archbishop of Canterbury was asked by the Today programme to pick his favourite sound, he chose the hubbub of kindly chatter in a local post office. It was a great choice - and very Anglican. For it's precisely this gentle exchange of greeting and gossip that keeps local communities healthy. Our national network of post offices may be losing £4m a week, but they perform a vital pastoral role that just cannot be measured on a balance sheet.

The trouble is, all this may soon be consigned to nostalgia, lumped in with Orwell's famous image of old maids cycling to Holy Communion through the morning mist. There are 2,500 local post offices earmarked to close by the year's end. For many these closures will mean one less reason to leave the house, one less opportunity for the sort of everyday conversation that makes someone feel connected and valued.

But the answer may be staring local communities in the face. In many places, just opposite the post office, the local church sits empty: the one an activity looking for a building and the other a building looking for activity. Surely a marriage made in heaven.

A few years ago, the Rev Annette Reed opened a post

office under the church tower in the Leicestershire village of Sheepy Magna.

That was the first. Since then church post offices have been springing up throughout the country, from Carlisle to the Isle of White. In practice, the church post office is simply an extension of the nearest full-time branch, open for a couple of mornings a week. The whole show is managed and staffed by the usual branch personnel and limited equipment is brought in for each session. It's remarkable how little space is required.

Some churches have opted for a more extensive service than this. Indeed, the vicar of Hemingford Grey in Cambridgeshire has gone and become the village subpostmaster himself. But the idea of a limited local service, set up on a trestle table in church, could be the answer to many people's prayers. It's so simple that more churches ought to be doing it. Even in my own London parish, faced with the prospect of losing two of Putney's post offices, we are working on the idea of hosting a mini branch. The local paper described it thus: "Father, Son and Holy Post".

**Giles Fraser**

*Giles Fraser is the Vicar of Putney*

### Chinese factory to supply one in four Bibles

China will become one of the biggest Bible producing countries in the world when a new printing press opens this month.

Nanjing, once the country's capital, is home to a 48,000-sq metre factory in an industrial park which will employ 600 non-Christian locals producing 23 Bibles a minute. Most will be distributed in China in 10 languages and braille. The plant is expected to supply a quarter of the world's Bibles by 2009.

The Amity Printing Company, a joint venture with the British Bible Society, printed its 50 millionth Bible last December and its new press, opening on May 19, will double annual production to 12m.

Peter Dean, a consultant for the Bible Society in Nanjing, said: "We got to the point where the volume of work was so great we hadn't got enough room to store the books in stages of binding and all the paper. It was everywhere."

Chinese people are becoming increasingly interested in Christianity, he added. "There are differing views on how many Christians there are but everyone agrees there is a lot of growth in the church." At least 7% of the population are estimated to be believers.

Although authorities lifted the ban on Christianity 30 years ago, restrictions remain. Smuggling unauthorised Bibles can still lead to a jail sentence.

*Riazat Butt - Guardian Religious affairs correspondent*

### What did you do in the Holidays?

The summer holidays are with us again, although not as prominent as in days gone by- as so many of us are lucky enough to have several holidays a year. There is still a question as to where you will go and what will the weather be like.

The schools "break up", the choir is away and Toddlers and Children's Hour close. The church services become quieter affairs with familiar faces missing as they take their breaks.

As a child my summers were spent with grandparents who always took a house at the coast in the UK for the full six weeks. There with my cousins and friends (it was very much "open house") we played away the sunny days. In the evenings we played cards, ludo or a variety of other games. At weekends exhausted parents would join us from their jobs and the house would expand to take us all. When I explain that my grandmother had five children, all with respective spouses and offspring you will get an idea of how crowded we sometimes were- not to mention other visiting relatives and friends. It was not unusual to have 20 sit for Saturday tea or Sunday lunch. Fortunately my grandmother in her youth had been a cook in a large house and thought nothing of preparing roast dinner and apple tart for this number. After lunch she would have a well deserved rest and we would deal with the washing up. No dish washers in those days!

These days trips take us further afield to places previously seen in books or on the news. Sometimes I can hardly believe that I am really there and it feels a bit like walking on a film set. When I explain that we are just back from Russia you will understand why.

However with global warming and high fuel prices how long we will be able to continue to travel far afield? Who knows?

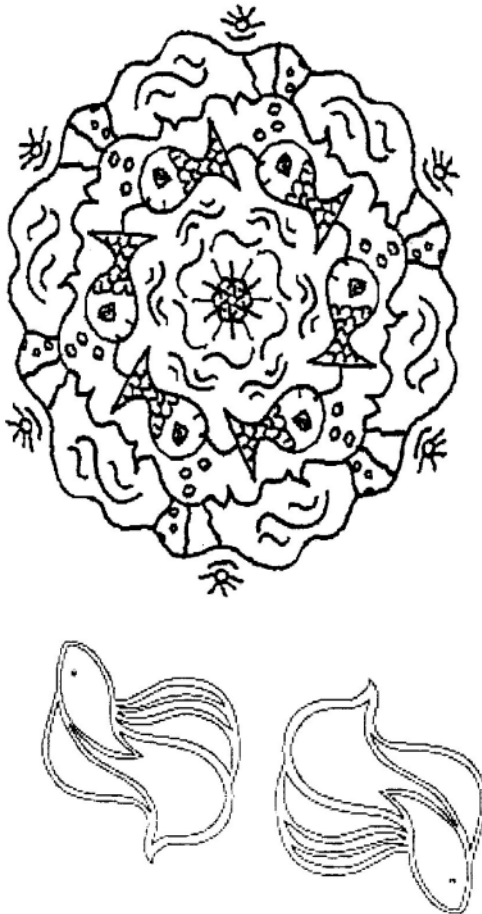
Have you got a special memory, recent or from some time ago, that you would like to share with the EPN?-Contributions to EPN tray in the church office. We'd love to hear from you.

Page 9 can be cut out if needed

A fishing net catches many different kinds of fish. The kingdom of heaven has many different kinds of people too!

How many fish can you see in this picture?

I can see \_\_\_ fish

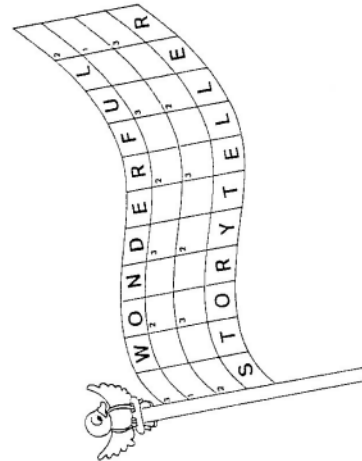


Jesus was a wonderful story teller!

Colour by number: 1 = orange 2 = yellow 3 = red

Now there are 5 pairs of gaps left. Can you fit in these pairs of letters to make 5 words reading down?

U E I E A  
L S F A S



Let me live cheerfully  
Let me live carefully  
Let me live thoughtfully  
Let me live prayerfully  
Amen

# Young Church Mag

27 July 2008: Tenth Sunday after Trinity: Matthew 13: 31 - 33, 44 - 52

A parable is a story!

Jesus told three parables all about the same thing. What was it?

Find out by doing this true or false puzzle!

Cats go "Woof"  
TRUE: Write J  
FALSE: Write K

Hens lay eggs  
TRUE: Write M  
FALSE: Write N

Rain is wet  
TRUE: Write H  
FALSE: Write I

Grass is pink  
TRUE: Write P  
FALSE: Write Q

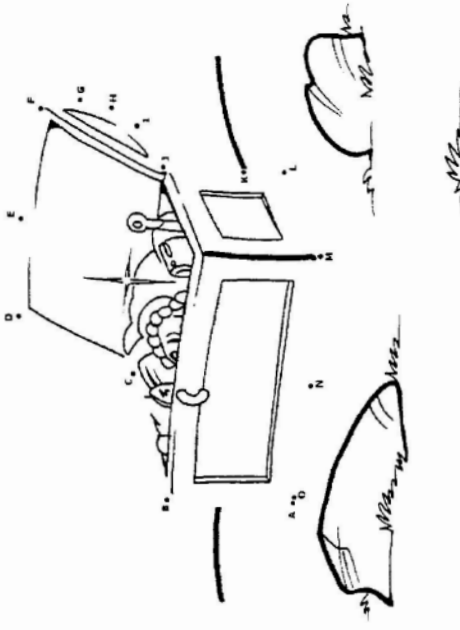


Page 10 can be cut out if needed

The kingdom of heaven is like a treasure hidden in a field, which someone found and hid; then in his joy he goes and sells all that he has and buys that field.

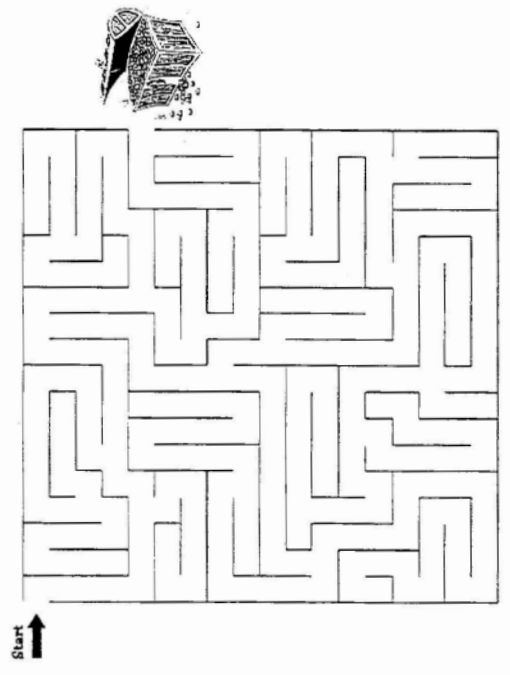
Matthew 13:44

Join the dots from A to O and then colour the picture!



Joke...  
Two pirate ships were crossing the ocean,  
One Ship had a Treasure Chest of full Red paint and the other had a Treasure Chest full of Blue paint.  
What happened when the ships collided...?  
They were marooned...!

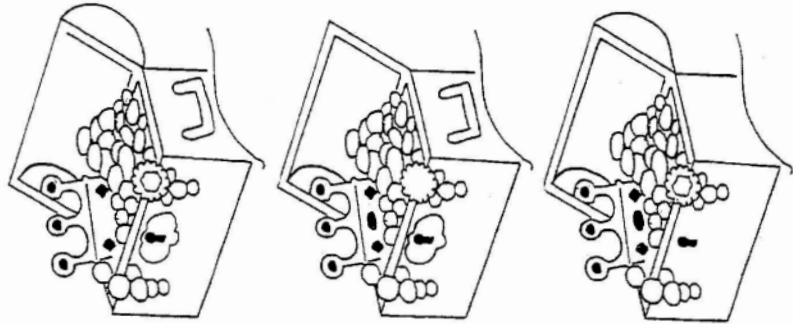
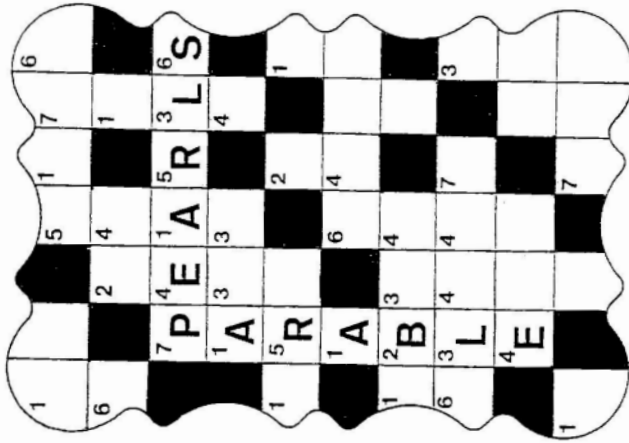
Can you find your way to the hidden treasure?



### Pearl parable puzzle

You can see that 7 = P, 4 = E, 1 = A and so on. So fill in all the squares that have numbers.

Now can you think of letters to go in the blank squares to finish the crossword?



Each of these 3 Treasure Chests has 2 things missing. Can you spot them?

It's difficult to find an Oyster with a pearl in it, but it's even more difficult to say this tongue-twister very quickly!

**So do you know what kind of noise annoys a noisy Oyster?  
A noisy kind of noise annoys a noisy Oyster!**

# KINGSWOOD SERVICES

## SPRING CLEANING

**Thinking of Spring Cleaning Your Home but You are too busy / dislike cleaning**

*We can help* - All Year Round - with

- Regular Cleans
- Thorough One-off Home Cleans
- Carpet Cleaning

undertaken by experienced people you can trust

**Superior Work at Sensible Prices**

*Domestic Cleaning and Commercial Contracts undertaken*

## HOUSE LETS

**Kingswood Services can also advise you on**

- House Letting arrangements
- Inventory Cleans
- Property Makeovers

To arrange a free no-obligation estimate or to request further details, please phone:

**020 8669 7298 (office)**

## **St Mary's Toddler Groups**

Sessions are held on:

Monday afternoon,  
Thursday and Friday  
mornings during term time  
in the church hall.

For more information:

Tel. 020 8393 4804

## **A la Carte Menu**

*with daily specials and Sunday roast*

## **Large Garden and BBQ**

## **Function Room with Bar**

*with capacity for 45 people*

*All functions catered for*



**The Rising Sun**

**The Rising Sun (Epsom) Ltd**

14 Heathcote Road, Epsom KT18 5DX

Tel: 01372 740809 Fax: 01372 740621

Email: [rising\\_sun@unicombox.co.uk](mailto:rising_sun@unicombox.co.uk)

[www.pub-explorer.com/surrey/pub/risingsunepsom.htm](http://www.pub-explorer.com/surrey/pub/risingsunepsom.htm)

*John & Debbie Baker, Proprietors*

# **ALFRED & EWART LONGHURST**

**FUNERAL DIRECTORS AND MONUMENTAL MASONS**

- A complete, caring professional service
- Estimates and advice freely given for funerals and memorials
- Flexible pre-paid funeral plan - details on request

**21-23, KINGSTON ROAD, EWELL**

**020 8393 1077**

